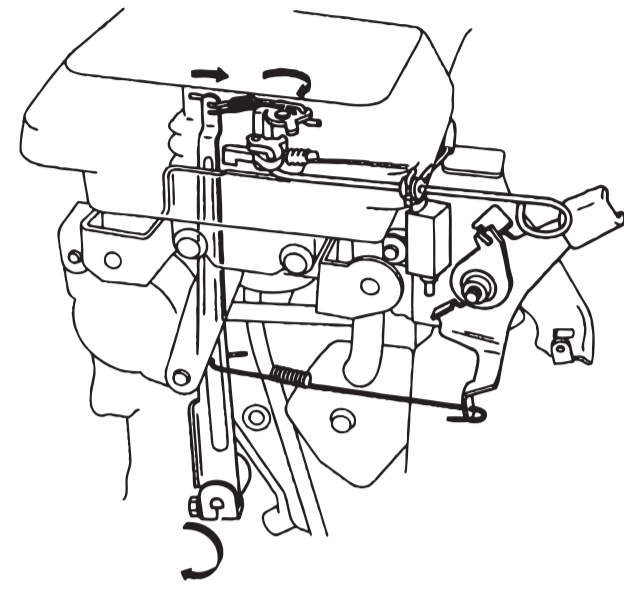
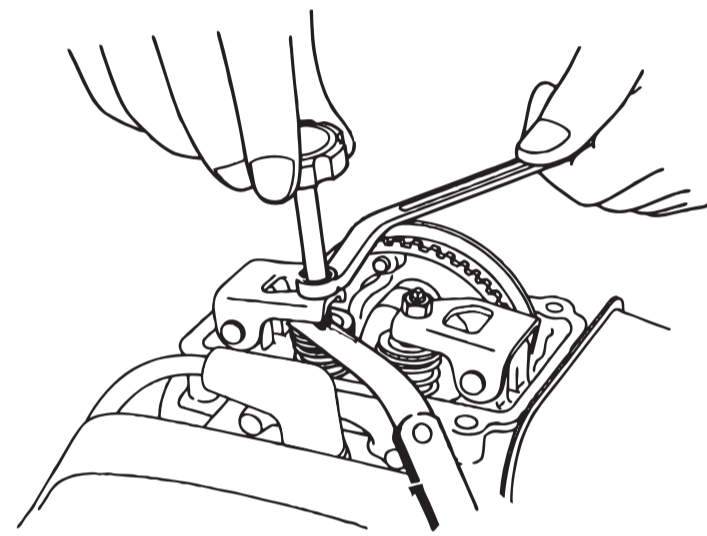


GOVERNOR



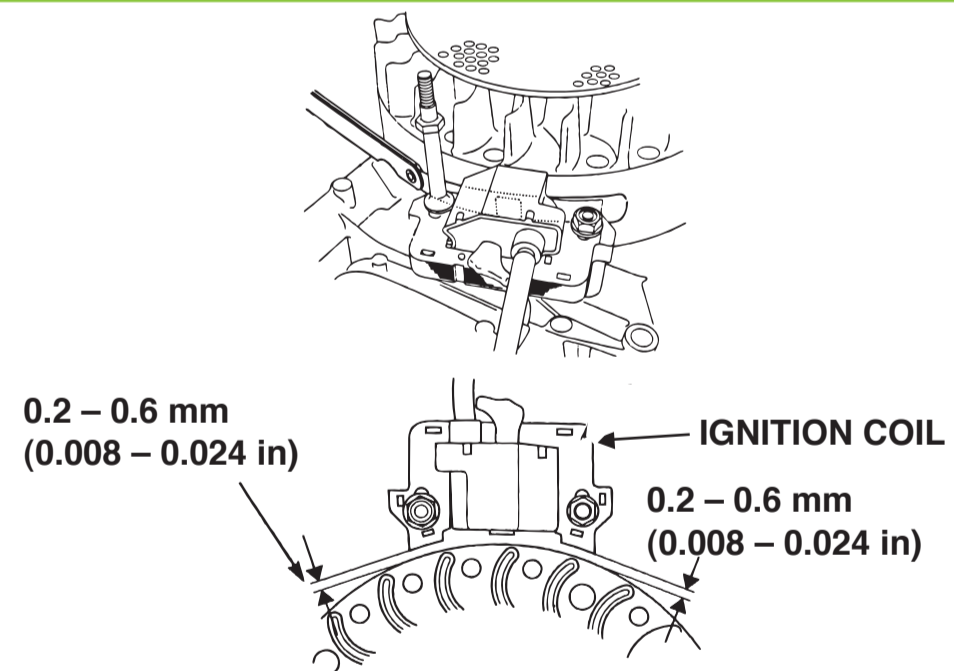
Maximum speed (no load) 3,850±150 min-1 (rpm)

VALVE CLEARANCE



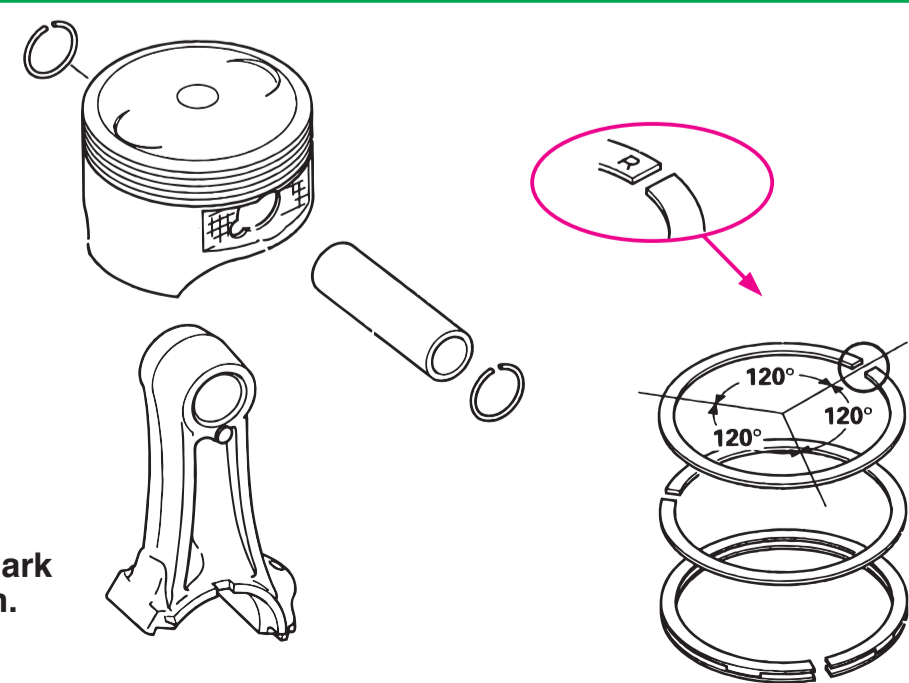
Standard valve clearance	IN	0.15±0.04mm (0.006±0.002 in)
	EX	0.20±0.04mm (0.008±0.002 in)

IGNITION COIL AIR GAP



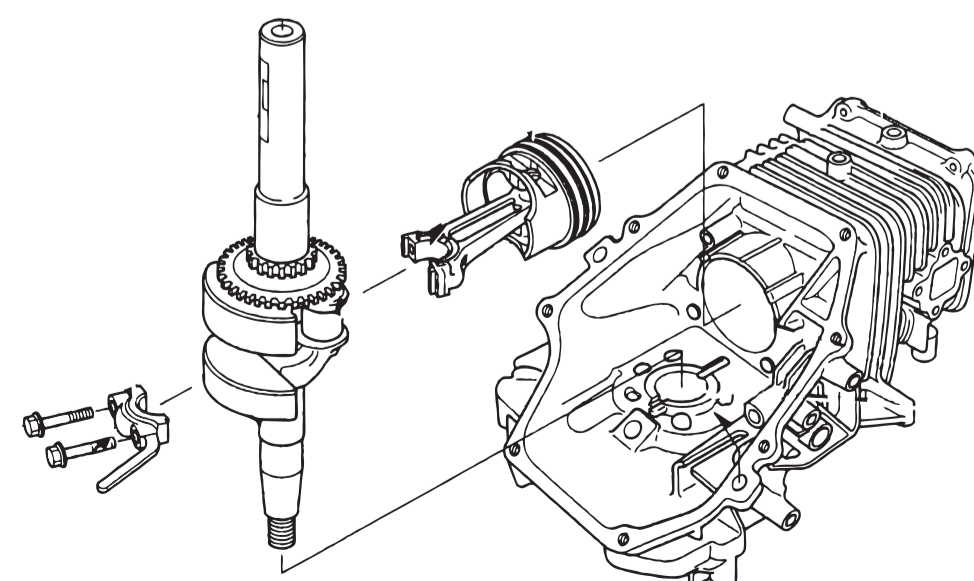
Specified clearance 0.2 – 0.6mm (0.008 – 0.024 in)

PISTON DISASSEMBLY/REASSEMBLY

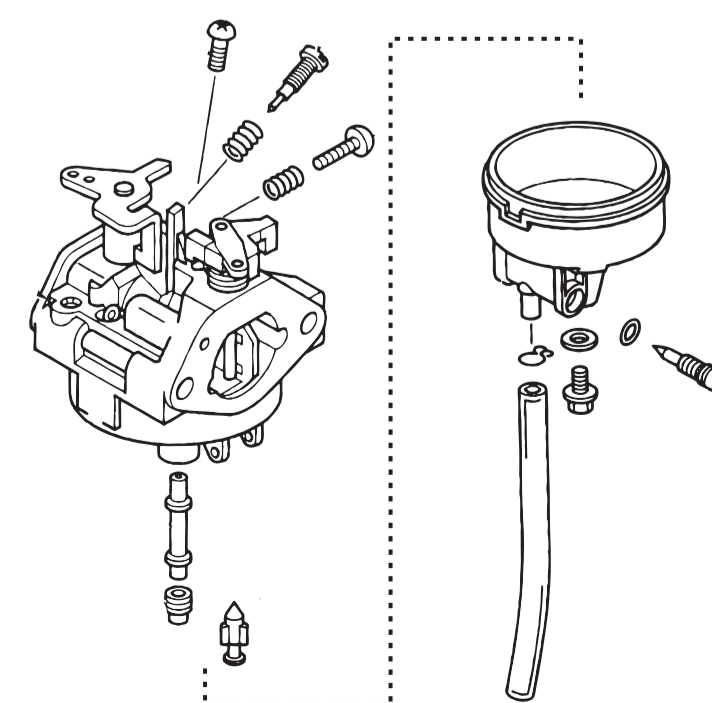


- Install with the maker mark facing upward as shown.
- Stagger the piston ring end gaps 120° apart. Do not align with the piston pin.

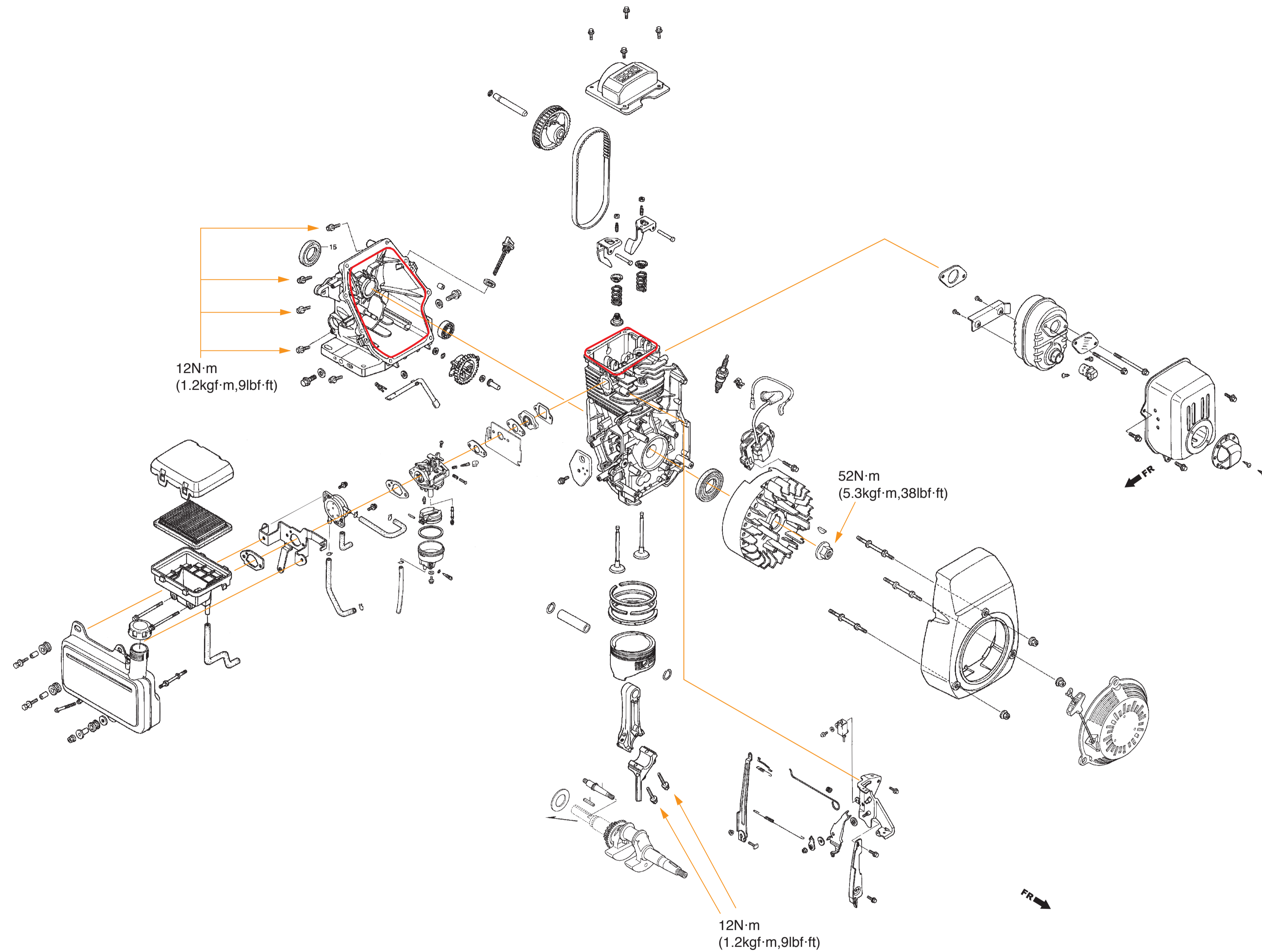
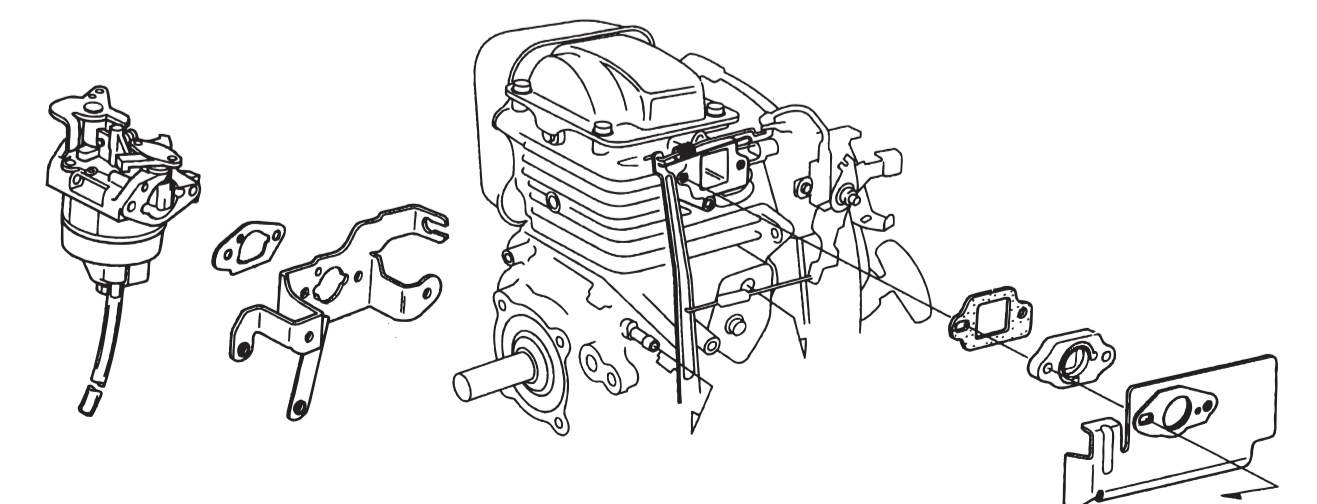
PISTON ASSEMBLY



CARBURETOR DISASSEMBLY/REASSEMBLY

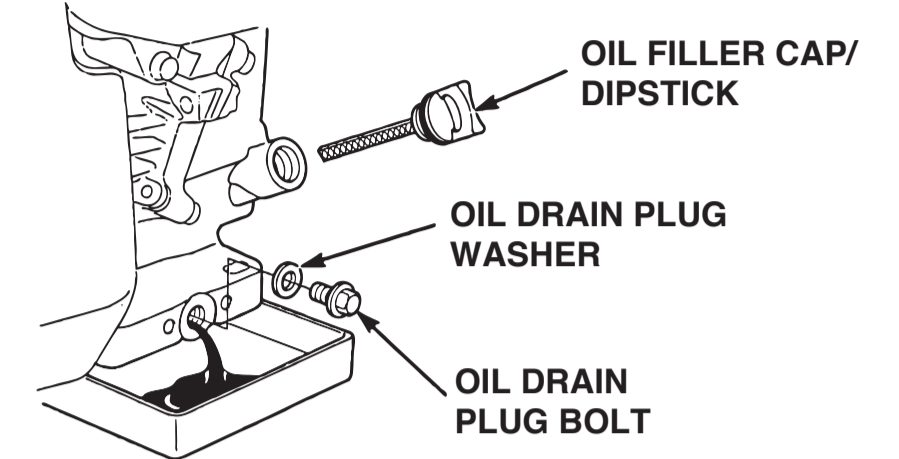


CARBURETOR REMOVAL/INSTALLATION



© Honda Motor Co., Ltd. Power Product Service Division.

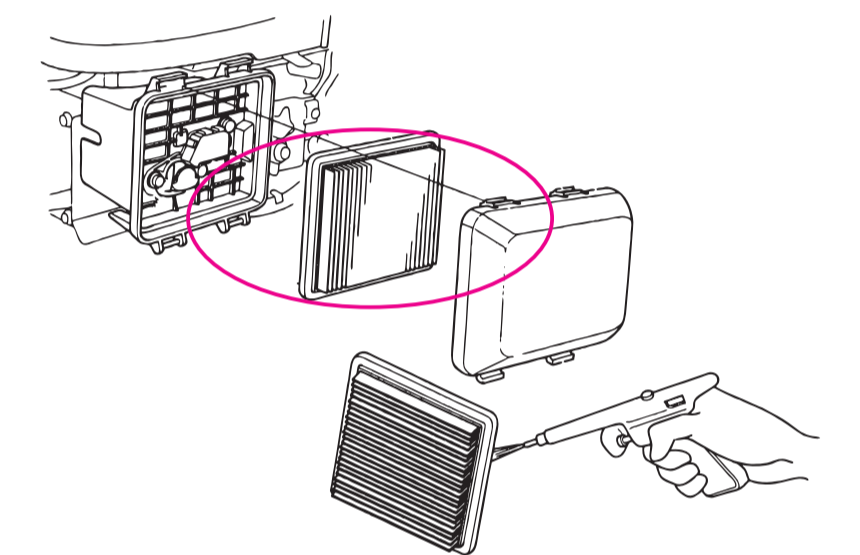
ENGINE OIL



Engine oil capacity 0.58 ℓ (0.6 US qt, 0.51 Imp qt)

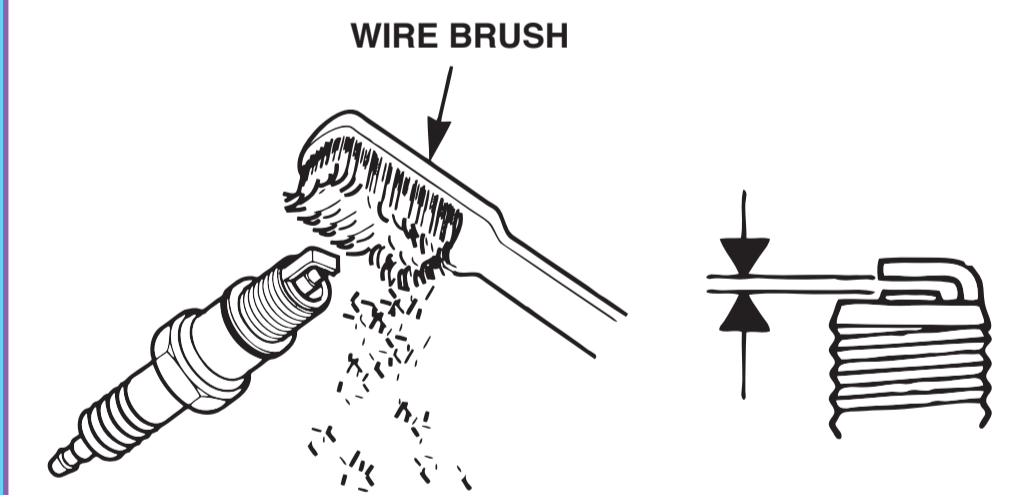
Recommended operating ambient temperature -15°C - 40°C (5°F - 104°F)

AIR CLEANER



Wipe dirt from the inside of the air cleaner cover and air cleaner case, using a moist rag. Be careful to prevent dirt from entering the air duct that leads to the carburetor.

SPARK PLUG



Spark plug gap 0.7–0.8mm (0.028–0.031 in)