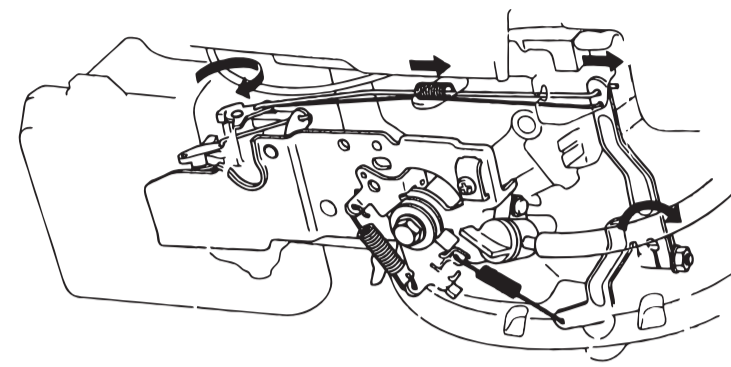
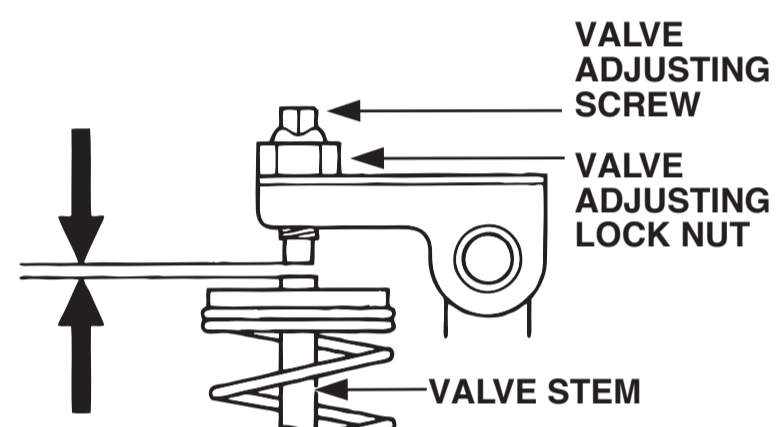


## GOVERNOR



	Maximum speed (no load)
European model, with fly-wheel brake	3,000 $\pm$ 100 min <sup>-1</sup> (rpm)
Except for European model, with flywheel brake	3,100 $\pm$ 150 min <sup>-1</sup> (rpm)
Except for European model, without flywheel brake	

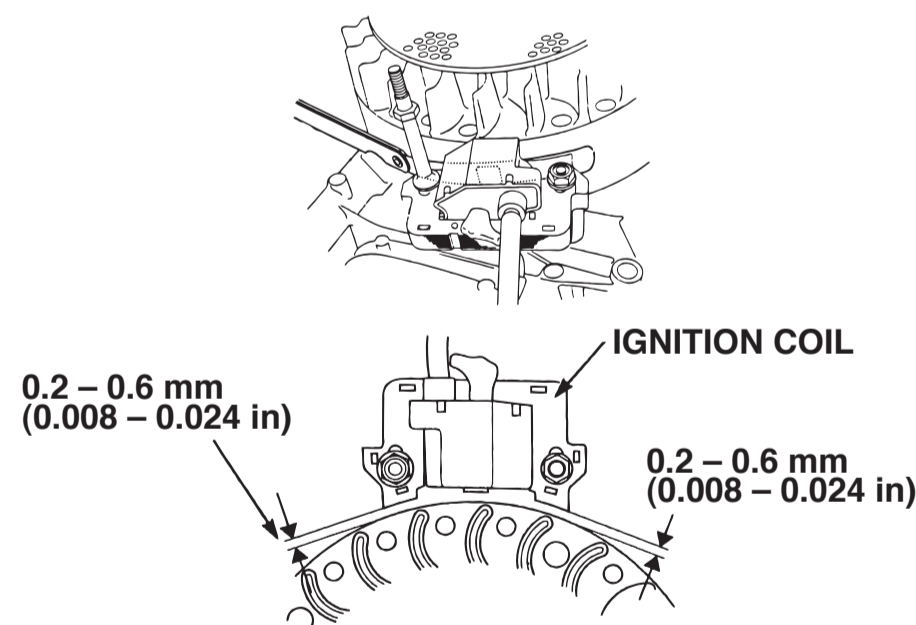
## VALVE CLEARANCE



To increase valve clearance, screw out.  
To decrease valve clearance, screw in.

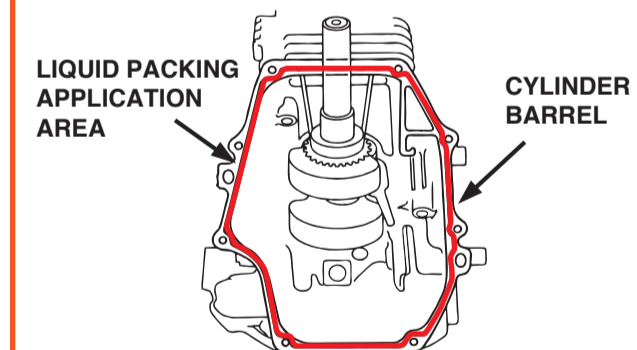
Standard valve clearance	IN	0.15 $\pm$ 0.04 mm (0.006 $\pm$ 0.002 in)
	EX	0.20 $\pm$ 0.04 mm (0.008 $\pm$ 0.002 in)

## IGNITION COIL AIR GAP

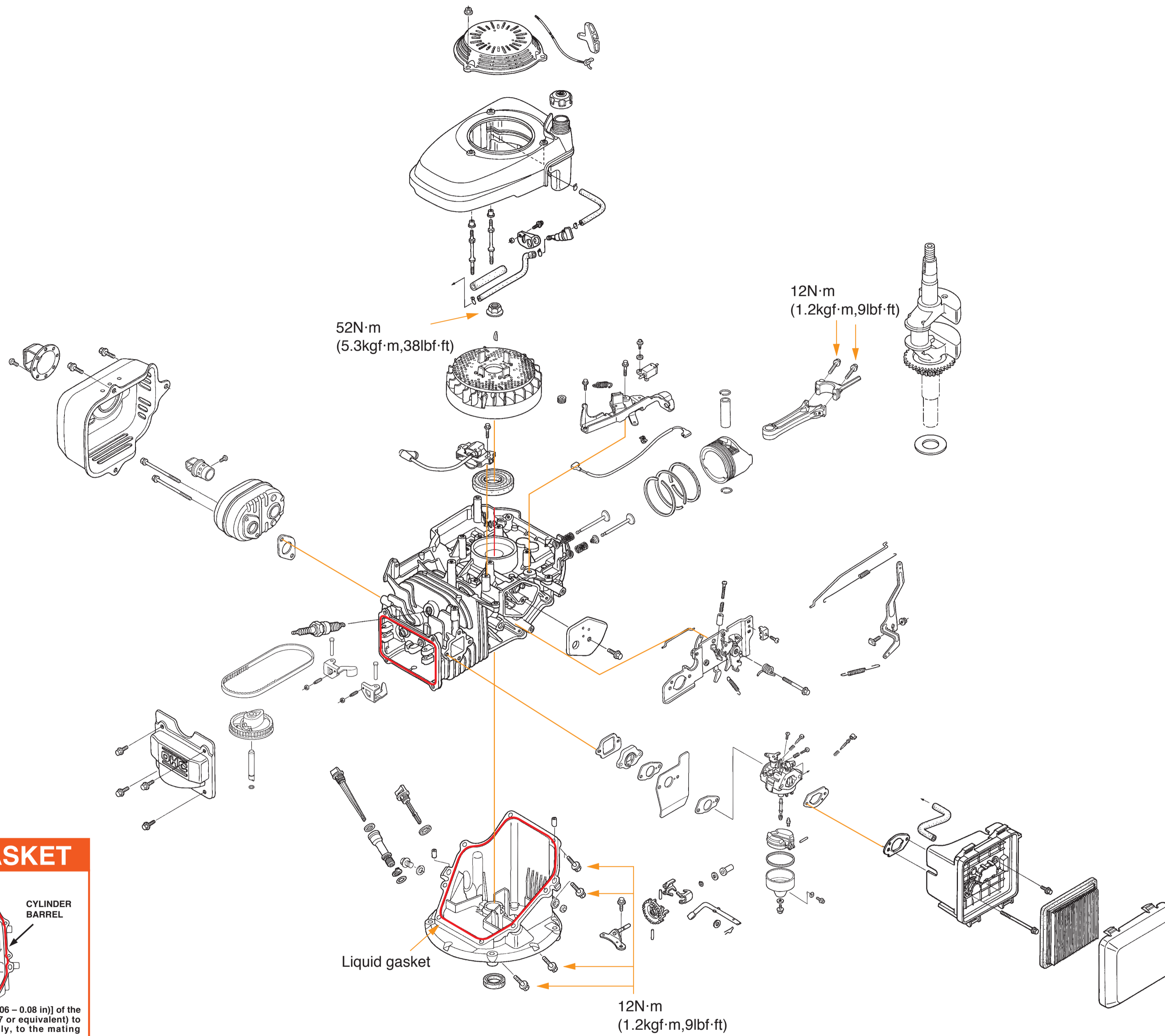


Specified clearance 0.2 - 0.6 mm (0.008 - 0.024 in)

## LIQUID GASKET

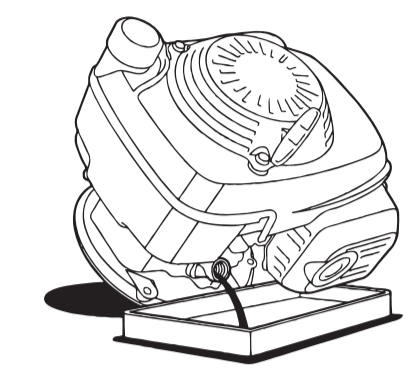


Apply the stick (1.5 - 2.0 mm (0.06 - 0.08 in)) of the liquid packing (Three Bond 1207 or equivalent) to the cylinder barrel; specifically, to the mating surface with the oil pan.

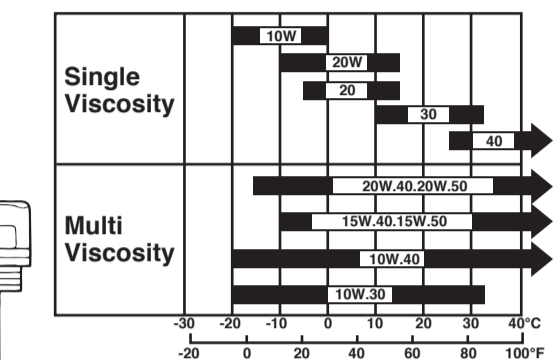
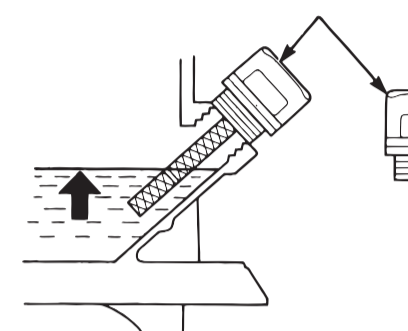


© Honda Motor Co., Ltd. Power Product Service Division.

## ENGINE OIL

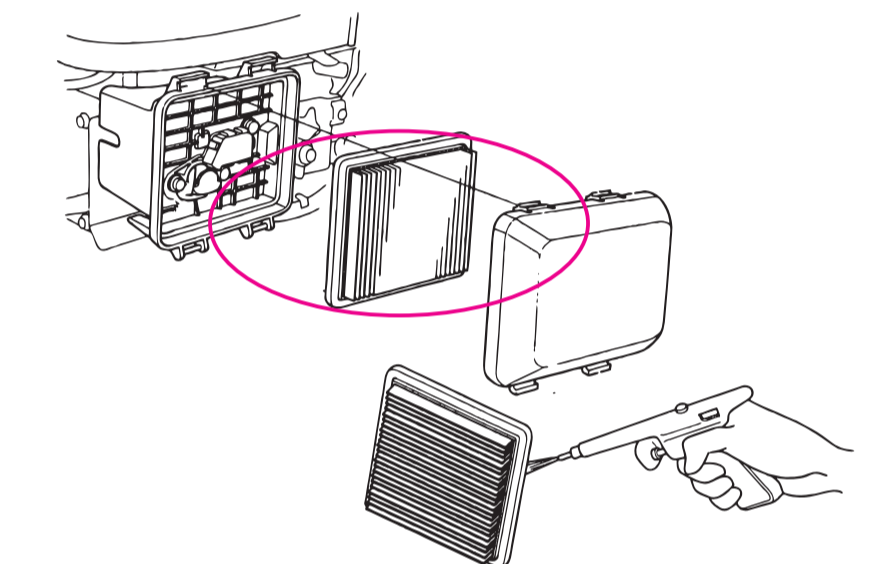


Engine oil capacity	0.55 $\pm$ l (0.58 US qt, 0.48 Imp qt)
Recommended operating ambient temperature	-5°C - 40°C (23°F - 104°F)



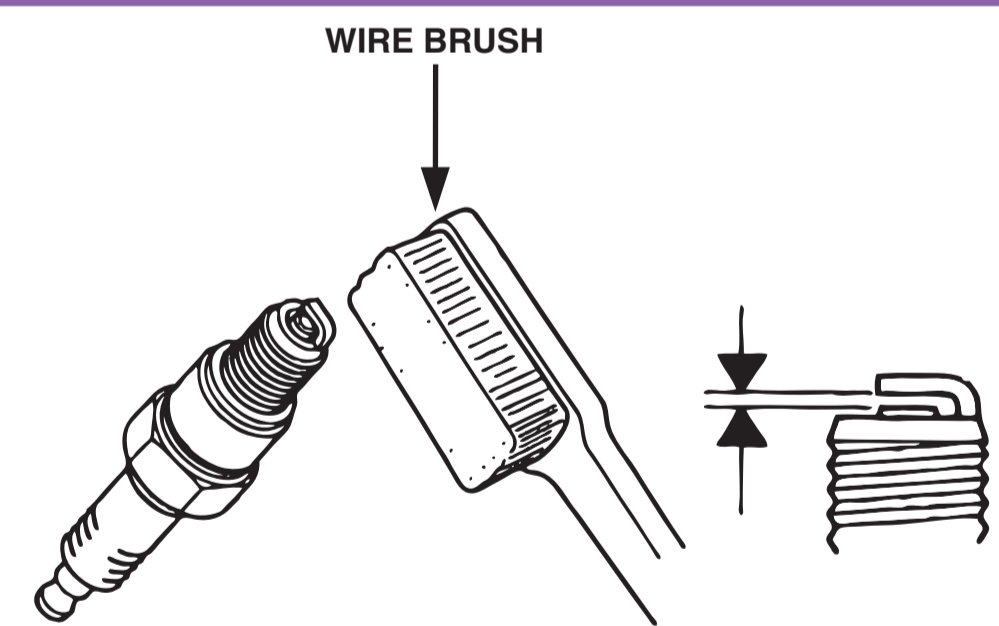
AMBIENT TEMPERATURE

## AIR CLEANER



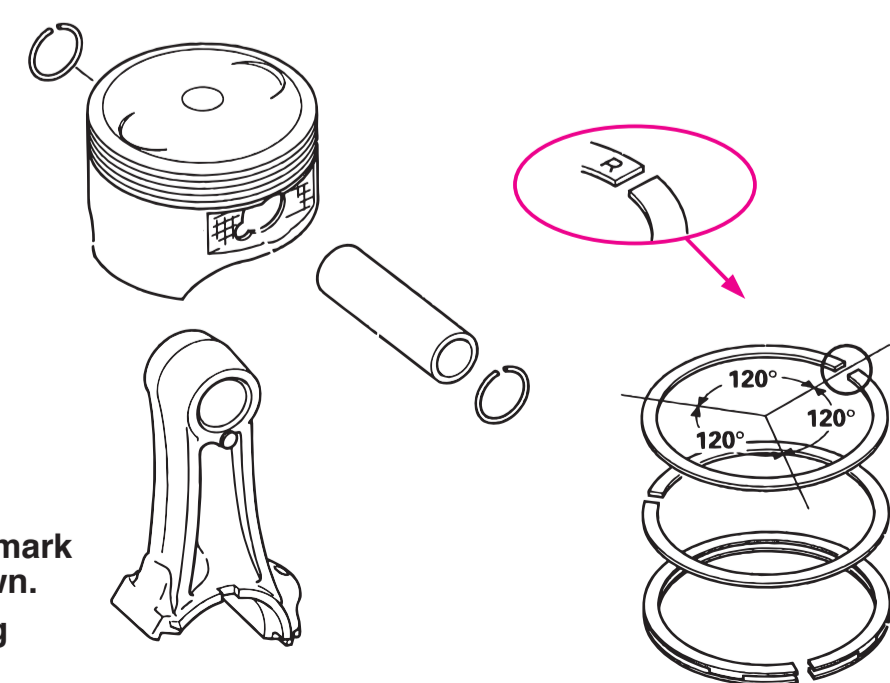
Wipe dirt from the inside of the air cleaner cover and air cleaner case, using a moist rag. Be careful to prevent dirt from entering the air duct that leads to the carburetor.

## SPARK PLUG



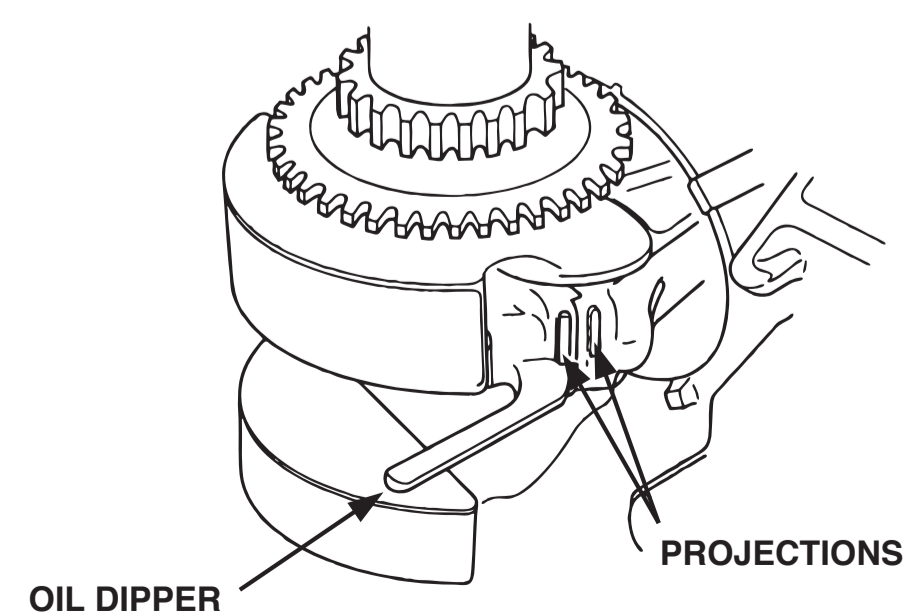
Spark plug gap 0.7 - 0.8 mm (0.028 - 0.031 in)

## PISTON DISASSEMBLY/REASSEMBLY

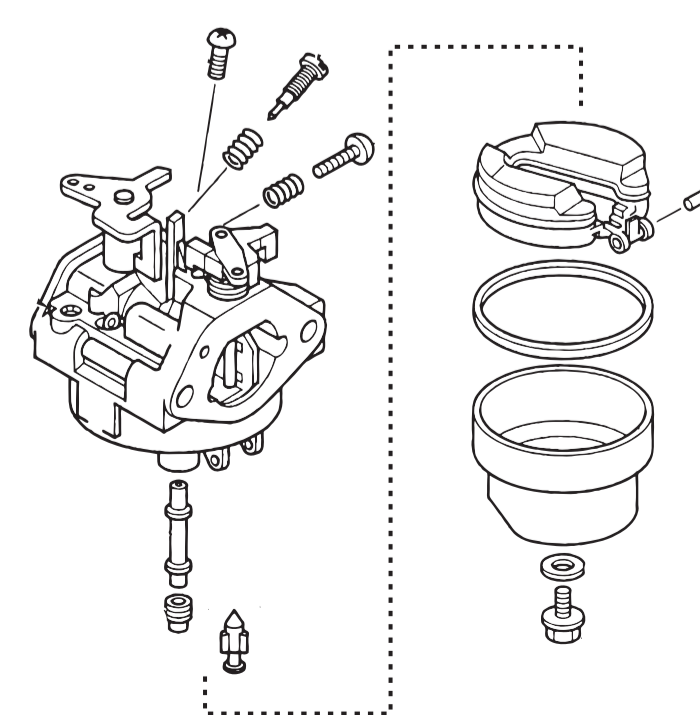


- Install with the maker mark facing upward as shown.
- Stagger the piston ring end gaps 120° apart. Do not align with the piston pin.

## PISTON ASSEMBLY



## CARBURETOR DISASSEMBLY/REASSEMBLY



## CARBURETOR REMOVAL/INSTALLATION

